





## Tasmania

Tasmania is famous for its great natural beauty, clean air and water and friendly people. It has magnificent and ancient forests, white sandy surf beaches, snow-covered mountains in winter and two of Australia's oldest cities.

Our wonderful outdoor environment makes Tasmania a popular sporting and adventure destination.

International and national cricket and football matches attract large crowds, while others enjoy rock-climbing, sailing, golf and surfing.

Tasmania is also known for its festivals and artistic community. We have festivals celebrating our food and wine – Taste of Tasmania (Hobart) and Festivale (Launceston) – and local and international bands

perform at many events including the Falls Music Festival. Artists are attracted to our beautiful and vibrant cities and towns, and you will find interesting galleries and events everywhere you visit.

Living in Tasmania is easy and the people are friendly. It is also very affordable compared to other Australian states.

### Climate

Tasmania has a comfortable climate with four different seasons

#### **Summer: December to February**

Average maximum temperature  
22 °C

#### **Autumn: March to May**

Average maximum temperature  
20 °C

#### **Winter: June to August**

Average maximum temperature  
13 °C

#### **Spring: September to November**

Average maximum temperature  
18 °C





## University of Tasmania

Established in 1890, the University of Tasmania (UTAS) is the fourth oldest university in Australia. It is highly regarded internationally as a teaching and research institution, and offers one of the best choices available in Australian higher education.

The University has a total student population of 20,000. This includes over 4,000 international students from more than 60 countries, of which approximately 2,200 study on campus. It has two major campuses, each with

an English Language Centre: Hobart and Launceston.

Both campuses offer a beautiful, enjoyable and safe environment for study. The Launceston campus includes the Australian Maritime College (AMC).

English Language Centre students enjoy access to the same services as UTAS students, including libraries, sporting facilities and support services.

## English Language Centre

The English Language Centre was established in 1989 and operates from two campuses: Hobart and Launceston. The Centre provides a variety of innovative English language programs including General and Academic English as well as direct entry programs to UTAS.



## Why study at the University of Tasmania's English Language Centre?

- Affordable tuition fees and living costs
- A safe and pleasant environment in which to live and study
- Situated on the University of Tasmania campus and providing access to the same services and facilities as University students
- Comprehensive orientation program and on-going student support
- A selection of General and Academic English programs providing a comprehensive range of skills, including those required for IELTS
- Qualified and experienced teaching staff
- IELTS testing centre on campus
- 24 hr access to computer laboratories
- Wireless laptop facilities





## Hobart

Hobart is Tasmania's capital city. It is Australia's second oldest city (after Sydney), and has a population of 200,000.

It has a beautiful location at the mouth of the Derwent River and the base of Mount Wellington, and residents and visitors enjoy stunning views wherever they are. Excellent public transport takes you from the city centre and its clubs, theatres and cinemas to local beaches and nearby nature reserves.

There are many things to do in and around Hobart, including:

- Salamanca Market, one of Australia's best outdoor markets
- Live bands, theatre and film festivals

- State and international cricket
- 'Taste of Tasmania' food and wine festival
- '10 Days on the Island' arts festival
- Bush-walking and skiing

### HOBART CAMPUS

The University's Hobart campus, including the English Language Centre, is set on 100 hectares of land in the suburb of Sandy Bay, about 15 minutes' walk from the city centre. Approximately 10,000 students attend the Hobart campus. Most students can walk to classes as they live in on-campus accommodation or in the surrounding suburbs.





## Launceston

Launceston is Australia's third oldest city and has a population of 100,000. It is located among rolling hills at the head of the Tamar River.

Launceston is the major city in the north of Tasmania and offers a wide range of shopping centres, cinemas, theatres, libraries, restaurants and clubs. It is located close to popular nature parks and vineyards. The magnificent Cataract Gorge is only 1km from the city centre.

There are many things to do in and around Launceston, including:

- Rock climbing and abseiling
- AFL football
- Live music and theatre
- Bush walking and skiing
- 'Festivale' food and wine festival
- '10 Days on the Island' arts festival

### LAUNCESTON CAMPUS

The Launceston campus of the University, including the English Language Centre and Australian Maritime College (AMC), is situated on 50 hectares on the banks of the Tamar River at Newnham. It is only 10 minutes by bus from the city centre. About 5,000 students are enrolled at this modern campus with many students living on-campus or nearby.



## English Language Centre Courses and Programs

English is used all over the world and can help you every day, whether at work, on holiday, or for your studies. The English Language Centre offers a range of English programs, from 5 to 50 weeks in duration, which will suit your needs.

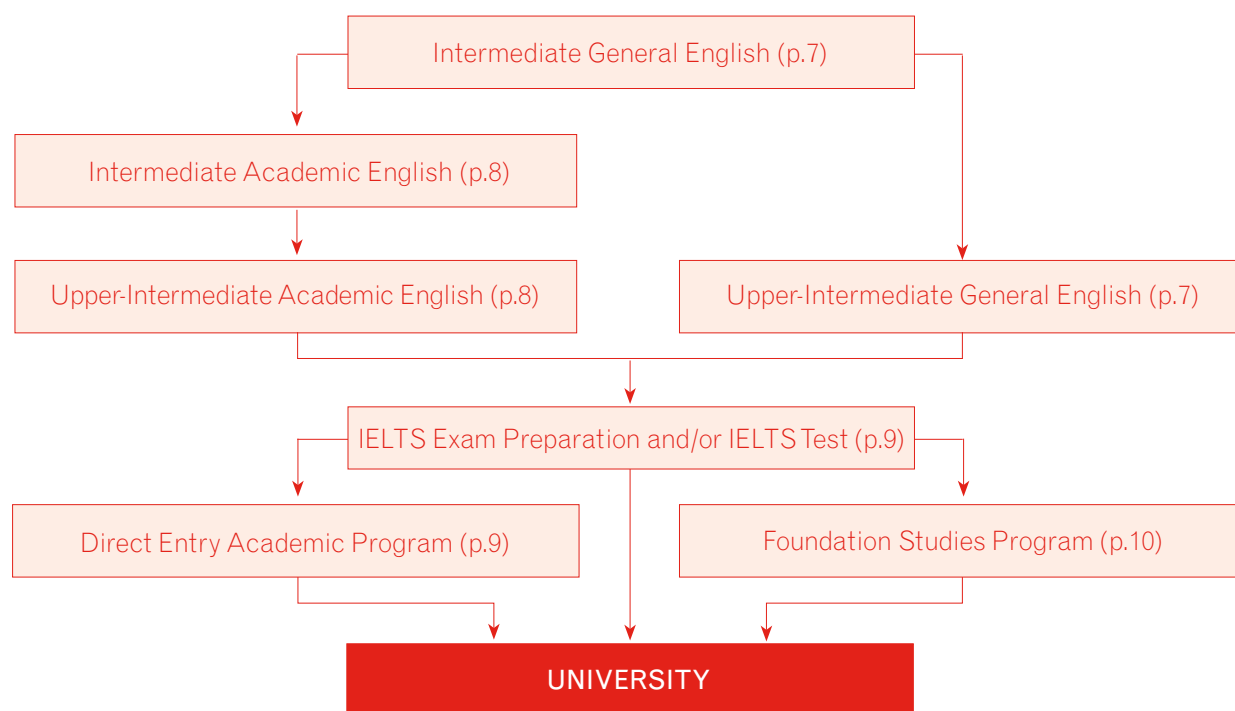
The English Language Centre can help you gain entry to university, including the University of Tasmania. Depending

on your existing language skills and academic background, you can choose one of the following options:

- General English
- Academic English
- IELTS Preparation Course
- Direct Entry Academic Program (DEAP)
- Foundation Studies Program



### PATHWAYS TO UNIVERSITY



## English Language Requirements

If you wish to undertake degree studies at the University of Tasmania you will need to meet the following English language requirements.

Type of Course	IELTS Academic	TOEFL/TWE	CBTOEFL	IBTTOEFL	Period of Validity
Undergraduate*	6.0 (no band less than 5.5)	550/4.5	213	80 (no score below 20)	2 years
Postgraduate (Coursework)*	6.0 (no band less than 6.0)	575/4.5	233	88 (no score below 20)	2 years
Postgraduate (Research)	6.5 (no band less than 6.0)	600/4.5	250	92 (no score below 20)	2 years
Foundation Studies Program	5.0 (no band less than 5.0)	520/3	173 (essay rating no less than 3.5)	68 (no score below 14)	2 years

\* English language requirements may be higher for some programs. Please visit [www.international.utas.edu.au](http://www.international.utas.edu.au) for more information.



## General English

**Duration:** 5 to 50 weeks

**Prerequisite:** Elementary English

General English courses will help you in many ways. These courses can provide a foundation for future studies, help with your job, or improve your English before starting a holiday in Australia. They are also great for those who have a general interest in the English language.

Please note that we do not offer English courses for beginners.

General English courses include:

- Class placement during orientation and continuous assessment throughout the course
- Pre-intermediate to Upper-intermediate level classes
- The skills relevant for IELTS tests including:
  - Listening
  - Reading
  - Writing
  - Speaking

- Grammar
- Conversation and discussions
- Pronunciation
- Classes may include:
  - Oral presentations
  - Guest speakers
  - Field trips
  - IELTS test techniques
  - Project work
  - Self-study
  - Computer language learning

### SAMPLE TIMETABLE FOR GENERAL/ACADEMIC ENGLISH COURSE†

Monday	Tuesday	Wednesday	Thursday	Friday
Grammar and vocabulary	Listening and speaking skills	Reading and vocabulary	Listening and speaking skills	Writing skills: sentences
Break				
Listening and speaking skills including pronunciation practice	English for everyday situations	Reading and writing skills	Listening skills using English television news programs	Paragraphs
Lunch				
Self study	Option classes*	Self study	Option classes*	Self study

†The English Language Centre may change timetables in response to student needs and operational requirements.

\*Option classes may include: IELTS reading and writing, city excursions, cooking, English in the movies, grammar games, conversation with Australians, sport, IELTS listening and speaking.



## Cambridge First Certificate in English Exam Preparation Course (FCE)

**Duration:** 15 weeks (Hobart only)

**Prerequisite:** Intermediate English

If you want to improve your English for your current job, or need higher-level English for a new job, the FCE is an excellent qualification. The FCE is for students at an Intermediate level, or higher, who want to improve all areas of their English for the workplace. Examinations are held in June and December.

Classes may include:

- Grammar
- Speaking
- Pronunciation
- Listening

- Vocabulary
- Reading
- Writing
- Cambridge exam preparation – exam structure, questions and time management
- Practice tests

### Special conditions

- A minimum of 12 students is required for the course to run.
- Fees and textbooks must be paid for prior to the course commencing. See our website for costs: [www.international.utas.edu.au/ELC](http://www.international.utas.edu.au/ELC)

## English plus Special Interest (Study Tours)

If you have a group of students wishing to visit Tasmania we can design a program that combines English language study with tours

of the local region. Please contact our Short Course and Study Tour Coordinator on [Studytour@utas.edu.au](mailto:Studytour@utas.edu.au) for more information.

## Academic English

**Duration:** 5 – 50 weeks

**Prerequisite:** Intermediate English and above

Academic English courses prepare you for university study. You need an Intermediate level of English to do an Academic English course.

All classes cover the skills relevant for IELTS tests, including:

- Listening
- Reading
- Writing
- Speaking
- Grammar
- Conversation and discussions
- Pronunciation

Courses also cover university study skills, including:

- Listening to lectures
- Taking notes
- Making oral presentations
- Reading texts for speed and accuracy
- Developing vocabulary and summarising
- Writing essays



TONY (Thailand)

“ I like the ELC because it has small classes, a good education system, and a lot of useful facilities. Moreover, I enjoy the class because the teachers have many funny ways to teach me, and help me understand the weaknesses in my English skills! In Launceston, the people are very kind, and it is a peaceful city – a good place for study. ”



KANAKO (Japan)

“ I chose the ELC because I can learn English in a small class, which is a good atmosphere for me, and all the students and teachers are very friendly. I've made many friends, who help me when I feel nervous! Tasmania has an extremely beautiful night sky, I can see the Milky Way and shooting stars. ”



## IELTS Preparation Course

**Duration:** 10 weeks

**Prerequisite:** available only for current English Language Centre students

This course gives excellent preparation and practice for the IELTS exam.

Classes may include:

- Language skills
- Test strategies, including time-management

- Regular test practice
- Academic language skills for university study

### Special conditions

- Available only for current English Language Centre students
- Students must pass an internal selection test to be eligible
- Student quotas apply

## IELTS Testing

The English Language Centre is the only IELTS test centre in Tasmania.

IELTS tests are held in Launceston and Hobart throughout the year.

Please see [www.international.utas.edu.au/ELC](http://www.international.utas.edu.au/ELC) for test dates.

## Direct Entry Academic Program (DEAP)

**Duration:** 10 or 15 weeks

### Prerequisites:

- Must have a conditional offer for a UTAS degree
- 15 week DEAP: IELTS Academic 5.5 (Writing 5, Reading 5), TOEFL 527 (TWE 4), CBT 190 (ER 4): IBT 68 (no score below 17)
- 10 week DEAP: IELTS Academic 5.5 (Writing 6, Reading 5.5), TOEFL 527 (TWE 4.5), CBT 190 (ER 4.5): IBT 68 (no score below 19)

This program is for students who have received a conditional offer to the University of Tasmania.

Students who successfully complete DEAP will not have to sit another IELTS test to commence their University studies.

Classes may include:

- Listening to lectures
- Oral presentations and tutorials
- Essay writing techniques
- Paraphrasing and summarising techniques
- Academic vocabulary
- Sentence structure/ academic level grammar

### Special conditions

- All applicants must have the required IELTS or TOEFL prerequisite scores and provide their original test results
- If students do not successfully complete DEAP they will be required to sit an IELTS test to enter the University
- DEAP does not satisfy the English language entry requirements for the Bachelor of Medicine Bachelor of Surgery (MBBS), Bachelor of Nursing fast-track program, nor for entry into 2nd or 3rd year of the Bachelor of Nursing degree.



## Foundation Studies Program

**Duration:** 32 weeks

**Prerequisite:** IELTS 5.0 with no band less than 5.0, as well as meeting minimum academic requirements (please see [www.international.utas.edu.au/static/FSP](http://www.international.utas.edu.au/static/FSP))

The Foundation Studies Program provides a pathway to university. It is designed for students who need to upgrade their high school results for university study.

The Foundation Studies Program is an intensive 32 week program. Students who pass the program at the required level can move directly into their chosen degree program as soon as the next semester begins.\*

The program has two intakes per year. Students undertake six subjects, which include three core subjects and three electives:

### Core subjects:

- Academic English
- Computing and Research
- Australian Studies

### Elective subjects:

- Accounting
- Biology – Environmental Studies and Life Processes
- Business – Management and Marketing
- Chemistry
- Legal Studies
- Mathematics
- Psychology
- Research Studies

Please note that subjects are conditional on student numbers.

## SCHOLARSHIPS

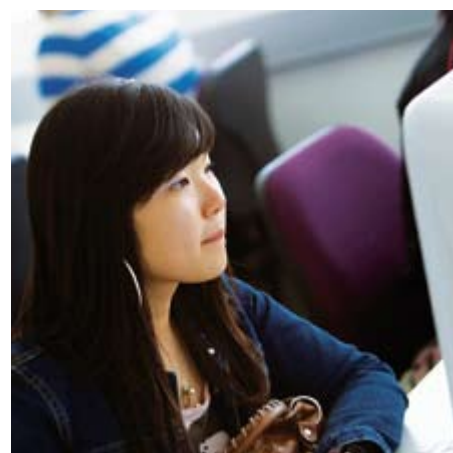
- Students in the Foundation Studies Program may receive a Tasmanian International Scholarship (TIS). These scholarships provide high-achieving students with a 25% reduction in Foundation Studies Program tuition fees.
- If you receive very good results in the Foundation Studies Program you may receive a TIS for your degree studies. This would reduce your tuition fees by 25% for the duration of your degree.
- All Foundation Studies Program graduates entering a University of Tasmania degree will receive a 10% reduction in tuition fees for the duration of their degree (unless they have been offered a TIS).

\*Excludes Medicine and Psychology. Please note that meeting the minimum entry score for Pharmacy does not guarantee entry due to the limited number of places available.

## English Language Teacher Training

For those wishing to become English language teachers, the English Language Centre delivers the Cambridge Certificate of English Language Teaching to Adults (CELTA). This intensive four-week course, for

suitably qualified adults, is one of the most widely recognised international qualifications in English language teaching. For more information visit [www.international.utas.edu.au/ELC](http://www.international.utas.edu.au/ELC).





## Frequently asked questions

### WHAT FACILITIES CAN I USE AT THE UNIVERSITY OF TASMANIA?

English Language Centre students have access to the full range of UTAS facilities and services. These include:

- Computer laboratories (open 24 hours)
- Libraries
- Free University email account
- Sports centre
- Medical surgery (Hobart only)
- Shops and food outlets
- Travel agent
- Student counselling, careers advisory service and student employment agency
- Student clubs and societies
- Entertainment and social events

### HOW MANY STUDENTS ARE IN EACH CLASS?

The maximum in any class is 18.  
The average class has 16 students.

### WHAT CLASS WILL I BE IN?

Your class level will depend on your language level and the kind of class you want. All students sit a Language Placement Test upon arrival. The test covers speaking with a teacher, listening, writing and reading. When new students talk with one of our teachers, we ask about your future study plans and your reasons for learning English. This will help the teachers to place you in the correct class and at the right level.

### WHAT ARE THE TEACHERS' QUALIFICATIONS AND EXPERIENCE?

All of our English language teachers have university degrees. They also must have special qualifications in Teaching English as a Second or Other Language (TESOL). A number of staff hold a Masters degree in TESOL. Most staff have lived and taught English in other countries.

### ARE THE COURSES ACCREDITED?

The English Language Centre's programs are accredited by NEAS

and we are a member of English Australia. This ensures that our programs and facilities are of the highest quality, our teachers are highly qualified and our students receive excellent support.

### WHAT DEGREES DOES THE UNIVERSITY OF TASMANIA OFFER?

The University offers a broad range of undergraduate and postgraduate degrees in the following faculties: Arts, Business, Education, Health Science, Law, and Science, Engineering and Technology, as well as the Australian Maritime College (AMC). For more information on our degrees, please visit [www.international.utas.edu.au](http://www.international.utas.edu.au).

### HOW DO I APPLY?

You can apply for the ELC by visiting our website at [www.international.utas.edu.au/ELC](http://www.international.utas.edu.au/ELC) and completing the online application form. If you prefer, you can download an application form from the site. For more information on applying please refer to the back cover of this brochure.



## Things to do in Tasmania

Tasmania is one of the world's most beautiful islands, famous for its native animals, ancient forests, clean white beaches and amazing scenery. It is very easy to travel around Tasmania and you can enjoy many activities.

### IN AND NEAR THE CITY

There is plenty to do in Hobart and Launceston:

- Cafes and restaurants
- Shopping
- Cinema and theatre
- Live music
- Museums

You will find peace and beauty nearby:

- Mount Wellington (Hobart)
- Cataract Gorge (Launceston)



### MARKETS

There are markets all over Tasmania selling:

- Food
- Clothes
- Antiques
- Craft



### FOOD AND WINE

Tasmania is famous for its food, wine and beer. You can visit:

- Berry farms
- Cheese producers
- Vineyards
- Breweries

### SPORTS AND ADVENTURE

Tasmania is a great place for adventure activities. You can try:

- Rock climbing
- Skiing
- Mountain biking
- Sea kayaking
- White water rafting
- Hiking

Sport is also very popular:

- Golf
- Tennis
- Football
- Swimming
- Cycling
- Sailing

- Surfing
- Horse riding
- Fishing

### HISTORY AND HERITAGE

Tasmania is Australia's second oldest settlement and has a rich history:

- Beautiful old buildings and towns
- Tasmanian Aborigines: 40,000 year history

### ART AND DESIGN

Tasmania attracts artists and designers from around the world. You can visit:

- Galleries
- Jewellery stores
- Furniture making studios
- Artists' studios



### NATURE, WILDERNESS AND WILDLIFE

Tasmania's most famous attraction is its nature:

- Beautiful wilderness areas
- Mountains
- Beaches
- Forests

Tasmania has many national parks, reserves and wildlife parks where you can see:

- Kangaroos
- Wallabies
- Echidnas
- Wombats
- Tasmanian devils
- Platypuses







## Accommodation

A wide variety of housing options is available for both the Hobart and Launceston campuses. Accommodation Officers at both campuses can help you find a place to stay. You can choose:

### HOMESTAY (HOBART AND LAUNCESTON)

- Live with an Australian family
- Your own furnished room
- All meals provided
- Share family activities

### UNIVERSITY SHARE HOUSES (HOBART)

- For students who want to live independently with other students
- Furnished single room
- Buy and cook your own meals in a shared kitchen
- Shared lounge, laundry and bathroom
- Close to the University and students can walk to their classes
- Get to know Australian and international students



### RESIDENTIAL COLLEGES: CHRIST COLLEGE AND FISHER COLLEGE ON CAMPUS (HOBART)

- Fully furnished single room
- Full board, includes all meals
- Easy walk to your classes
- Internet connection
- Get to know Australian and international students

### UNIVERSITY APARTMENTS ON CAMPUS (HOBART)

- Modern 6 bedroom apartments
- Fully furnished single room
- Buy and cook your own meals in a modern kitchen
- Residents can purchase meal packages
- Internet connection
- Get to know Australian and international students



### LEPRENA ON CAMPUS (LAUNCESTON)

- Fully furnished single room
- Buy and cook your own meals in a shared kitchen
- Shared bathrooms, lounge/TV area and laundry
- Internet connection
- Get to know Australian and international students

### KERSLAKE HALL ON CAMPUS (LAUNCESTON)

- Fully furnished single room
- Buy and cook your own meals in a shared modern kitchen
- Shared bathrooms, lounge/TV area and laundry
- Internet connection
- Pleasant grounds with barbecue facilities
- Get to know Australian and international students

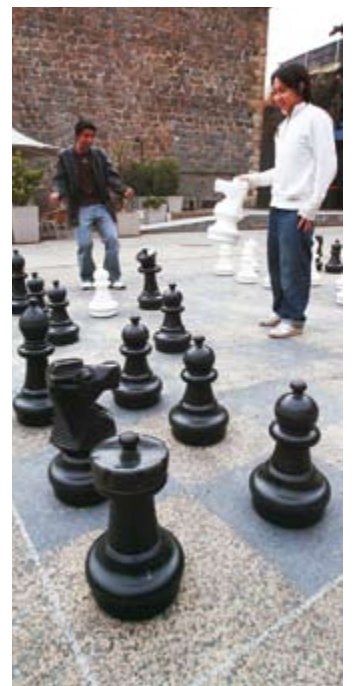
Visit [www.international.utas.edu.au](http://www.international.utas.edu.au) for information on current accommodation fees and application forms.



**Disclaimer:** All information contained in this brochure is correct at the time of publication. The University reserves the right to alter or amend any details as required.

For detailed information on all UTAS courses, campuses, facilities, fees, refund policy, rules of admission and assessment, the ESOS Framework and an overview of the local Tasmanian environment, please visit the UTAS International Students website on: <http://www.international.utas.edu.au>









## How to apply

Applying to the English Language Centre is easy!

Visit [www.international.utas.edu.au/ELC](http://www.international.utas.edu.au/ELC) and apply online or download an application form.

If you need assistance, the University of Tasmania has a number of registered agents to help you in your home country. This service is free. To find the agent closest to you visit <http://www.international.utas.edu.au/rep/>

For all enrolment information please contact:

Admissions Officer  
English Language Centre  
University of Tasmania  
Private Bag 14  
Hobart Tas 7001  
Australia

Tel: +61 3 6226 1781

Fax: +61 3 6226 1885

Email: [English.Language@utas.edu.au](mailto:English.Language@utas.edu.au)

[www.international.utas.edu.au/ELC](http://www.international.utas.edu.au/ELC)



Australia



Tasmania

