

# ILSC AUSTRALIA

Discover your passion. Discover yourself.



LANGUAGE  
SCHOOLS

BRISBANE / SYDNEY

[WWW.ILSC.COM.AU](http://WWW.ILSC.COM.AU)

# START YOUR LEARNING JOURNEY WITH ILSC AUSTRALIA!

At ILSC Australia, YOU get to create your own unique learning path to reach your dreams, and we're here to support you every step of the way.

ILSC Australia offers a wide variety of language courses and programs to choose from, in areas like Communication, English for Academic Purposes, Test Preparation, Business, Humanities, Internship, and more.

Come learn with us in this South Pacific paradise. With a variety of accommodation options and fun adventures and activities to participate in, studying at ILSC in Australia will be an unforgettable experience!

## TABLE OF CONTENTS

- 3** Choose ILSC Australia
- 4** ILSC-Brisbane
- 6** ILSC-Sydney
- 8** Homestay
- 9** Activities
- 10** Build Your Own Learning Path
- 11** Courses and Programs
- 14** University Pathway Program
- 15** IELTS Mastery
- 16** Mastery Programs
- 17** Internship Programs and Services
- 18** TESL for Young Learners
- 19** Admissions
- 20** Your Future Success
- 21** Stories from ILSC Graduates



EA  
English Australia



NEAS  
National ELT Accreditation Scheme



ACPET  
Australian Council for Private Education and Training



Study in Australia





# CHOOSE ILSC AUSTRALIA

## WHERE LANGUAGE COMES ALIVE!



### STUDENT-CENTRED

We believe that you will be motivated to learn when learning things that personally interest you. The structure of a set curriculum combined with the flexibility to accommodate your own interests gives your language learning the freedom to flourish. Bring your passions and personal interests into the classroom.



### BUILD YOUR UNIQUE SCHEDULE FROM A VARIETY OF LANGUAGE PROGRAMS AND COURSES

At ILSC, you get to choose your study schedule and select from a wide range of course options. Personalise your learning experience by choosing from core courses and electives to suit your language level and satisfy your interests and goals. Improving your language skills at ILSC is part of an amazing adventure!



### DIVERSE STUDENT POPULATION

ILSC attracts students from around the world and is committed to maintaining a diverse student body—no single language group makes up the majority. At ILSC, you will experience a truly cross-cultural learning experience, and will make amazing friendships that will last a lifetime!



### EXPERIENCED TEACHERS AND SUPPORTIVE STAFF

Teachers at ILSC must have a university degree, a recognised teaching certificate and relevant teaching experience. All of our instructors are English speakers, and are carefully selected for their ability to motivate and inspire. ILSC's staff will welcome and support you with whatever personal or academic challenges you face and will set you up for success!



### EXPERIENCE LOCAL LIFE WITH A FAMILY OR INDEPENDENTLY

ILSC's Student Accommodation Department can place you with a local homestay family, giving you a supported cultural living experience and a great opportunity to practice your language skills at home. If you want to live independently or with other students or travellers, ILSC also offers student residences.



### EXCITING ACTIVITIES

An ILSC education is designed to maximise your language improvement and the ILSC activities program complements this perfectly. Our activities are available throughout the week and weekend, so there is never a dull moment, in or out of the classroom!

## Facility Highlights

- 21 classrooms
- Data projectors or interactive whiteboards and audio equipment in every classroom
- 1 computer lab
- 1 student lounge with Wii and ping pong table
- 2 student kitchens
- 2 covered patios
- WiFi internet access
- Prayer room

## Accommodation Options

- Homestay
- Furnished shared student apartments

## Popular Activities

- Bridge walk to South Bank to explore the pools
- Weekend trip to the Gold Coast
- Visit the West End markets
- Tangalooma Island Resort
- Brisbane's many art galleries and museums

## Language Study Available

- English

## Life in Australia

For cost of living, climate info and more, visit our website: [www.ilsc.com.au/life-in-australia.aspx](http://www.ilsc.com.au/life-in-australia.aspx)

## Campus Location

232 Adelaide Street, Level 1  
Brisbane, Queensland  
4000, Australia



CRICOS CODE: 02137M

# ILSC-BRISBANE

Brisbane, the third largest city in Australia, is a sleek, international city in the east, just north of the Gold Coast. You will fall in love with its year-round, warm subtropical climate and the beautiful Brisbane river that curves gently through the heart of the city.

The friendly, down-to-earth locals will help you feel safe at home among world-class art galleries, a booming live music scene and cool café culture. The ILSC-Brisbane campus overlooks a lovely park, only two minutes from Central Railway Station. The student lounge opens out onto a protected, enclosed terrace, where students can take breaks, relax and eat lunch. ILSC-Brisbane also holds fun activities like student BBQs on this comfortable terrace.



## SPRING

In spring, be sure to check out the **Brisbane Festival**, an arts and culture event that takes place throughout September and ends with a fantastic fireworks display along the winding **Brisbane River**. Brisbane's International Film Festival also takes places in spring. It is warm this time of year, and a good time to check out **South Bank** beach in the city, or ride "**The Wheel of Brisbane**," a 60-metre tall Ferris wheel that offers a spectacular 360-degree view of the city.

## SUMMER

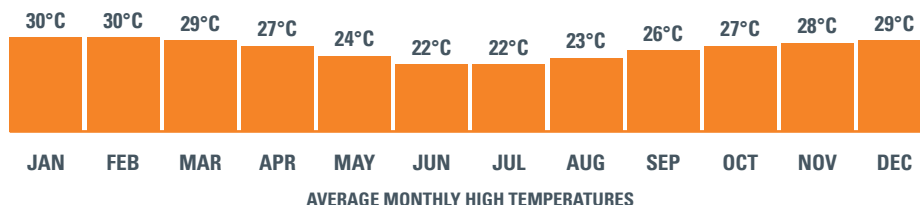
Get out and enjoy the sunshine and heat! Brisbane's summer is the perfect time to visit **Stradbroke Island** to go sand tobogganing or snorkeling or check out Tangalooma Resort on **Moreton Island** and hand-feed the resident dolphins. Summer is also a great time to head south to the famous **Gold Coast** where you can learn to surf or just relax and enjoy the beach. If you want to stay in town, head to **Sandgate** to try stand-up paddleboarding, or just enjoy the local shopping and culture.

## FALL

Fall has a few fun festivals that you can enjoy. The **Future Music Festival** tours around Australia and brings many big names in international entertainment to the city. In March, the **Bluewater Festival** kicks off an exciting Yacht Race, and the celebration includes fireworks, markets and entertainment. Fall temperatures are comfortable, so you'll definitely want to spend time outside enjoying nature or outdoor events around the city.

## WINTER

Brisbane winters are a comfortable temperature, perfect for hikes, bike rides or strolls through the city. In the winter, you could go for a hike at **Mt. Coot-tha**, which is visible from the city or head a little further to **Mount Tamborine**. Humpback whales migrate past Brisbane starting in June, so make sure to head to the seaside to take a look. While it's never really cold in the winter, if you want to feel cozy you can visit the **Lone Pine Koala Sanctuary** and hug a koala.



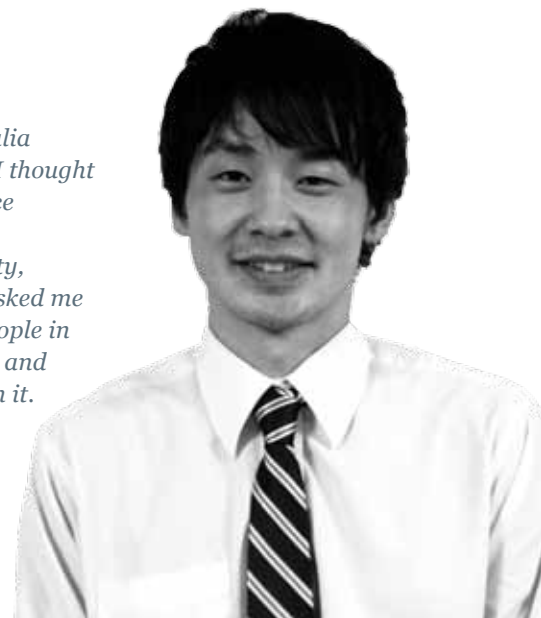




“

*I chose ILSC-Brisbane in Australia because it is a safe country and I thought it was best for my first experience travelling to a foreign country. When I was just exploring the city, grabbing a map, many people asked me “Hi! Where do you want to go?” People in this country are always friendly and kind. I am highly impressed with it.*

**Yuichi Sakabe**, Japan



## Facilities Highlights

- 18 classrooms
- Plasma televisions in every classroom
- 1 computer lab
- 1 student lounge with Wii and ping pong table
- 1 student kitchen
- WiFi internet access
- 1 prayer room
- Resource centre

## Accommodation Options

- Homestay
- Furnished shared student apartments

## Popular Activities

- Walking tour: the Opera House, Harbour Bridge and more
- Luna Park amusement park
- Explore the Blue Mountains
- The Rocks food markets
- Bondi Beach surf lesson

## Language Study Available

- English

## Life in Australia

For cost of living, climate info and more, visit our website: [www.ilsc.com.au/life-in-australia.aspx](http://www.ilsc.com.au/life-in-australia.aspx)

## Campus Location

Level 6, 540 George Street  
Sydney, NSW 2000  
Australia



CRICOS CODE: 02137M

# ILSC-SYDNEY

Sydney is Australia's oldest, largest and most diverse city, with a population of over four million people. This vibrant, cosmopolitan city is a popular tourist destination with a huge range of sightseeing options.

Play outside at one of the 30 surf beaches including the legendary Bondi Beach or enjoy strolling along the beautiful harbour, blooming with sailboats. Visit the world-famous Opera House, dine at edgy restaurants or explore urban galleries celebrating indigenous aboriginal art.

The Sydney campus is located inside the iconic Woolworths building, opposite Sydney's Town Hall. It is conveniently located in the Central Business District, close to major bus routes and the train station, and is just a few minutes' walk from Pitt Street Mall, Darling Harbour, and beautiful Hyde Park.



## SPRING

Spring is a comfortable time of year in Sydney, meaning it's warm enough to get out on the beach and learn to surf, windsurf, or go on a **harbor cruise**, while also being cool enough to enjoy a good walking tour of the city to check out its many sights. There are also a few good events taking place during this season, including the **Food Festival**, and "**Stereosonic**," an international music festival.

## SUMMER

In summer, the city gets hot, and you'll be glad that Sydney has more than **70 beaches** for you to cool off at. The summer is also full of arts, music and culture festivals, so there's never a dull moment.

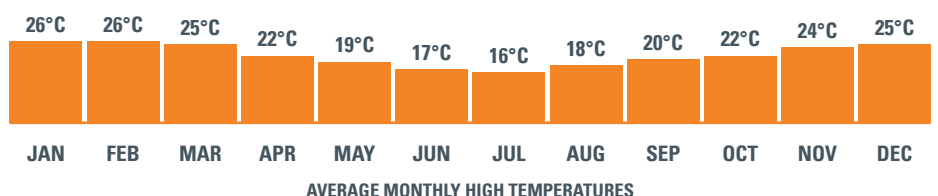
**The Sydney Festival** takes place throughout the month of January, and brings some of the world's best performers to the city. On Australia Day, fireworks light up **Darling Harbour**. The city's biggest yacht race takes place this time of year, and it's also a good time to take in a cricket game.

## FALL

In fall, temperatures cool down a bit, similar to the spring, but you can enjoy the beach pretty much year-round. **Aussie Rules Football** season starts in fall, so check out this unique contact sport that was invented in this country. Other adventures include hiking in the **Blue Mountains** or checking out the **Jenolan Caves**. For a taste of culture, visit the **Botanical Gardens** for the Autumn Vibes festival, which includes music and dance performances from cultures around the world.

## WINTER

Winter in Sydney is a little bit cooler, but never cold, so you can continue to enjoy all of the usual activities available. For something a little different, you could check out the **Sydney Winter Festival** where you can go ice skating and enjoy mulled wine at **Bondi Beach** while the surfers walk by in their shorts. If you're really craving winter sports, take a half-day trip out of the city to "**The Snowies**," the highest mountains in Australia, for a ski or snowboard trip.







“

*I'm very happy to have chosen ILSC-Sydney as my study school. It is great to be able to live in such a beautiful and sunny country. The Sydney facilities are also fantastic for students, with big classrooms, a large common area and a really central location. The instructors are extremely passionate and dedicated to their students' personal improvement—I loved this a lot.*

**Diana Kursteiner**, Switzerland







# HOMESTAY

## LIVE LIKE A LOCAL

You'll be surprised how quickly your speaking improves when you're immersed in English from breakfast until bedtime. ILSC's integrated homestay program carefully selects families who provide a friendly, supportive and welcoming home environment for students.

**HOMESTAY GIVES STUDENTS A WINDOW INTO THE UNIQUE CULTURE AND FAMILY LIFE IN AUSTRALIA. SOME WILL DISCOVER FRIENDSHIPS THAT LAST A LIFETIME.**

Most homestay families live about 45 to 60 minutes from ILSC by public transit. Each family provides their student guest with a furnished private bedroom, a shared bathroom and meals. ILSC's multilingual Student Accommodations staff monitor each home to make sure it is appropriate, and are always available to help you if any problem or issue happens to arise.



## SHARED ACCOMMODATION

### CONNECT WITH STUDENTS FROM AROUND THE WORLD

Shared Accommodation is a popular and affordable living option for international students. ILSC's shared accommodations are fully furnished units or houses equipped with internet access. Bills, such as water, electricity, and gas, are included in the fees. Living in shared accommodation allows students to easily manage the daily costs of living while enjoying their own private time and space. This is the ideal option for independent students.

Shared accommodations are located approximately 30 minutes from ILSC campuses.





# ACTIVITIES

## BEYOND THE CLASSROOM

Getting outside to play and explore is a cornerstone of the ILSC experience. It's a chance to relax after class, and spend time with your new friends while practising English in the real world. Whatever your interests, there are activities to match—from rock climbing and rugby games to theatre, music festivals, and cultural tours. An ILSC staff member will be your guide, and the only costs are transportation and entry fees where required. Weekends at ILSC are a chance to get away from the city for a two or four day adventure and experience the exciting travel destinations that Australia has to offer.

In Australia, go snorkeling at the Great Barrier Reef, learn to surf on the stunning Gold Coast, head into the outback and visit Ayers Rock, and discover Australia's unique wildlife at one of the many animal sanctuaries, or visit some of the famous local beaches. There are also many special events and parties to bring the ILSC community together. ILSC's activities coordinators will be able to fill you in on all of the exciting adventures and social events available to you when you arrive.



## SAMPLE SCHEDULE

### AFTER CLASS ACTIVITIES



**MONDAY**  
Shopping



**TUESDAY**  
Coastal walk



**WEDNESDAY**  
Visit a museum



**THURSDAY**  
Downtown tour



**FRIDAY**  
School BBQ  
in the park



**SATURDAY**  
Day trip to the Blue  
Mountains (Sydney) or  
Fraser Island (Brisbane)



### ONGOING SCHOOL EVENTS

Culture days, fundraisers, parties, sports days, guest speakers, Chit-Chat and Morning News Clubs (free)

# BUILD A LEARNING PATH THAT'S AS UNIQUE AS YOU ARE

## STUDY SCHEDULES

Choose your schedule then choose your courses to build your learning path.

SCHEDULE	LESSONS*/ WEEK	DAYS	AM	PM		4:45PM – 9:00PM (INCLUDES 15 MIN BREAK)
			9:00AM–12:00PM	1:00PM–2:30PM	2:45PM – 4:00PM	
FULL-TIME INTENSIVE	31 lessons (26 hours)	MON–THU	Choose a 3 hour morning course	Choose 2 afternoon skills electives		NO COURSE
		FRI		NO COURSE		
FULL-TIME	25 lessons (21 hours)	MON–THU	Choose a 3 hour morning course	Choose 1 afternoon skills elective	NO COURSE	
		FRI		NO COURSE		
PART-TIME AM	17 lessons (15 hours)	MON–FRI	Choose a 3 hour morning course	NO COURSE		
PART-TIME PM	13 lessons (11 hours)	MON–THU	NO COURSE	Choose 2 afternoon skills electives		
FULL-TIME EVENING**	24 lessons (20 hours)	MON–FRI	NO COURSE		4 HOUR COURSE	

\*1 lesson = 50 minutes

\*\*Nighttime course selection does not include all courses listed

## CUSTOMISE YOUR LANGUAGE LEARNING JOURNEY

Choose from over 70 courses, skills electives and programs and build a study schedule combining topics that match your personal interests, goals and dreams.

Every 4 weeks, customise your learning by choosing new courses and skills electives!\*

### MORNING COURSES

ILSC’s morning courses cover a wide range of study topics. You can take any course you wish, based on your interests, goals, and language level. Most courses are offered at many different levels and offer room for growth and advancement.

### AFTERNOON SKILLS ELECTIVES

Afternoon skills electives let you focus on specific areas and delve into unique language learning topics. Skills electives span more than one level allowing you to share strengths and skills with others.

### PROGRAMS

ILSC’s programs combine specific ILSC courses to focus on building skills in a particular area. Programs are designed to help you achieve defined learning goals. While ILSC’s programs have specific course requirements, they still offer you the flexibility to choose between a variety of course options.

\*Number of courses varies depending on your study schedule



# COURSES AND PROGRAMS

ILSC offers a wide range of courses. You can take any combination you wish depending on your interests, goals, language level and schedule.

Most courses are offered at many different levels and last four weeks (one ILSC session). At the end of the four week session, your language level will be assessed. You can then choose new courses and may move up a level in your current or new course.

- Course offerings and levels may vary depending on student enrollment and location.
- In some courses, students at multiple language levels are combined. This enables them to draw on the strengths and skills of others and advance through mentoring their peers.
- All programs offered in Brisbane and Sydney Australia are part of Course: English Language Programs for International Students. (Beginner to Advanced) (4-56 weeks) CRICOS Code: 060152J

LEGEND: **S** SYDNEY **B** BRISBANE

COURSES (3 HOURS)	SKILLS ELECTIVES**												PROGRAMS
	BEGINNER				INTERMEDIATE				ADVANCED				
	B1	B2	B3	B4	I1	I2	I3	I4	A1	A2	A3		
<b>ENGLISH</b>													
<b>COMMUNICATION</b>													
English Communication	●	●	●	●	●	●	●	●	●	●	●	●	S B
Speaking Dynamics					●	●							S B
Speaking Excellence							●	●	●				S B
<b>ACADEMIC &amp; TEST PREPARATION</b>													
English for Academic Purposes	●	●	●	●	●	●	●	●	●	●	●	●	S B
Cambridge CAE (Certificate of Advanced English)									●	●			S B
Cambridge FCE (First Certificate in English)						●	●	●					S B
Cambridge PET (Preliminary English Test)					●								S B
IELTS (International English Language Testing System) *			●	●	●	●	●	●	●	●	●	●	S B
TOEIC® Preparation			●	●	●	●	●	●	●	●			S B
<b>BUSINESS</b>													
Business English			●	●	●	●	●	●	●	●			S B
Business English for Management & Human Resources							●	●	●	●	●		S B
<b>HUMANITIES</b>													
English Through Brisbane				●	●	●	●	●	●				B
English Through Journalism					●	●	●	●	●	●	●		S B
English Through Sydney				●	●	●	●	●	●				S

\*IELTS Mastery is a Full-Time schedule course





## PROGRAMS

	BEGINNER				INTERMEDIATE				ADVANCED			AVAILABLE CAMPUS
	B1	B2	B3	B4	I1	I2	I3	I4	A1	A2	A3	
<b>BUSINESS ENGLISH MASTERY PROGRAMS</b>												
Business English Communication Mastery							●	●	●	●	●	S B
Business English & Hospitality Mastery				●	●	●	●	●	●	●	●	S B
<b>UNIVERSITY PATHWAY PROGRAM</b>												
University Pathway Program	●	●	●	●	●	●	●	●	●	●		S B
<b>TEST PREPARATION PROGRAM</b>												
IELTS Mastery (Full-Time or Full-Time Intensive Schedule)					●	●	●	●	●	●	●	S B
<b>INTERNSHIP PROGRAMS</b>												
Job Placement Guarantee			●	●	●	●	●	●	●	●	●	B
Volunteer Internship Program							●	●	●	●	●	S B
<b>TEACHER TRAINING PROGRAMS*</b>												
TESOL for Young Learners					●	●	●	●	●	●	●	S B
<b>OTHER PROGRAMS</b>												
Customised Group Programs	●	●	●	●	●	●	●	●	●	●	●	S B
Executive Business English/French	●	●	●	●	●	●	●	●	●	●	●	S B
Private Tutoring in English/French	●	●	●	●	●	●	●	●	●	●		S B

\*ILSC also offers teacher training programs at the college level. See the ILSC Colleges and Teacher Training section for more info.



# University Pathway Program

**NO IELTS OR TOEFL REQUIRED!**

Develop your academic English skills and gain **seamless** entry into one of ILSC's reputable college and university partners.

- Seamless entry into a partner school—no IELTS or TOEFL tests required
- Over 60 partner schools in Canada, the USA, and Australia, and growing
- Get a conditional offer from ILSC and your chosen partner school upon registration
- Develop the skills to help you succeed at the college or university level
- Academic and cultural counselling to help you meet your goals and make your transition to a new country easy

[WWW.ILSC.COM/UP](http://WWW.ILSC.COM/UP)



MSIT



Raffles College of Design and Commerce



Southbank Institute of Technology



Blue Mountains International Hotel Management School



University of the Sunshine Coast



Le Cordon Bleu



James Cook University-Brisbane

## AUSTRALIA

Begin your studies at any level. The total time to complete UPath will depend on your study schedule, start level and student progress.

START LEVEL	BEGINNER 1- INTERMEDIATE 2	INTERMEDIATE 3	INTERMEDIATE 4	ADVANCED 1	ADVANCED 2	
<b>TOTAL TIME REQUIRED TO COMPLETE UPATH</b>	Varies depending on start level and student progress		3-5 months for TAFE entry 4-7 months for Undergraduate entry 6-8 months for Postgraduate entry		2-3 months for TAFE entry 2-4 months for Undergraduate entry 4-5 months for Postgraduate entry	
<b>HOURS</b>	<b>UPATH FOUNDATION</b>	<b>INTERMEDIATE 3</b>	<b>INTERMEDIATE 4</b>	<b>ADVANCED 1</b>	<b>ADVANCED 2</b>	
9:00 AM-12:00 PM	Students are advised to take Academic Preparation courses.	IELTS Mastery Target 5.5 <b>OR</b> English for Academic Purposes*	IELTS Mastery Target 6 <b>OR</b> English for Academic Purposes*	IELTS Mastery Target 6.5 <b>OR</b> English for Academic Purposes*	IELTS Mastery Target 7 <b>OR</b> English for Academic Purposes*	
1:00 PM-2:30 PM		IELTS Mastery Target 5.5 <b>OR</b> Academic Speaking & Listening	IELTS Mastery Target 6 <b>OR</b> Academic Speaking & Listening	IELTS Mastery Target 6.5 <b>OR</b> University Preparation	IELTS Mastery Target 7 <b>OR</b> University Preparation	
2:45 PM-4:00 PM		Choose an Academic Elective from suggested options**	Choose an Academic Elective from suggested options**	Choose an Academic Elective from suggested options**	Choose an Academic Elective from suggested options**	

\*For students in Beginner 1-Intermediate 2, and for those taking English for Academic Purposes instead of IELTS Mastery, a UPath Advisor will recommend skills courses based on your academic goals.

\*\*Suggested Academic Skills Electives include: Academic Vocabulary, Public Speaking, Writing, Reading, Grammar, Listening, Pronunciation, Vocabulary, International Currents Events, Test Preparation, Business English, English for Nursing (BNE only), English for Finance (BNE only) or Technical English (BNE only).

### Partner Schools







# IELTS Mastery

The purpose of the IELTS Mastery is to prepare students for the Academic version of the **IELTS (International English Language Testing System)** exam. It covers all four test modules; Listening, Academic Reading, Academic Writing, and Speaking.

This course gives students the opportunity to specifically target each macro-skill, as well as develop grammar, academic vocabulary and writing skills in order to obtain their target IELTS band score and move on to their academic goals either through direct entry into university or through ILSC's University Pathway Program.

**PROGRAM LENGTH:** Each level is offered over up to 3 sessions in the Full-time Schedule or Full-Time Intensive schedule.

**AVAILABLE CAMPUS:** **S** **B**

## TARGET LEVELS



Focus on speaking and listening using everyday knowledge and vocabulary to communicate about family and general interests. Get familiar with IELTS testing and increase your test-taking confidence.



Continue to build on the vocabulary and communication needed to discuss both familiar and unfamiliar topics, and build test talking familiarity. Begin to develop academic vocabulary and focus on building reading skills to recognise and become familiar with the conventions, grammar and vocabulary used in academic writing.



Start to develop and demonstrate the range, fluency and language control of a competent communicator. Build skills to express ideas with clarity in a variety of ways. The focus will shift from reading to writing to actively producing the language studied in academic readings at the lower levels.



Work with a wide range of vocabulary, language structures, themes and register. Build the skills of a native speaker. Focus is on integrating the knowledge built at the lower levels and strengthening coherence by building advanced grammar and vocabulary.



Build the final layer of skills needed to speak at length on a range of topics accurately, fluently and without effort. Focus is still on grammar and vocabulary, pronunciation and fluency.



Build a higher level of fluency, and accuracy of expressing ideas and manipulating language to convey the nuances of expression. Focus is still on grammar and vocabulary, pronunciation and fluency.

“The things I learned in the Business Mastery program were very useful and gave me confidence to deal with people. I learned about many business cultures in different countries and a lot of professional vocabulary for business. I also learned how to deal with problems with products and customers. In the afternoon, I took “Café Work Skills” and learned about coffee history, types of beans and coffee. At the end, this program was effective to increase my TOEIC score too.

**Jia Rung Chang,**  
*Taiwan*

# Mastery Programs

ILSC's Mastery Programs provide focussed learning in a particular area of English language learning. Students combine specific required courses and skills electives, and leave with the ability to use English effectively for business and/or hospitality.

## **BUSINESS ENGLISH AND HOSPITALITY MASTERY PROGRAM (BEHMP)**

Improve understanding of basic business practices. Learn basic written and oral English skills that will help prepare you for an entry-level job in Australia's hospitality industry.

**PROGRAM LENGTH:** 2 sessions (based on Full-Time schedule)

**ENTRY LEVEL:** Beginner 4

**AVAILABLE CAMPUS:** **S B**

**COURSE AND ELECTIVES:**

**AM 3 HOUR:**

- Business English (2 months)

**PM SKILLS ELECTIVES:**

Choose 2 of the following electives

- English for Travel and Hospitality (2 months)
- Café Work Skills
- Assertiveness
- Thinking & Problem Solving Skills

## **BUSINESS ENGLISH COMMUNICATIONS MASTERY PROGRAM (BECOM)**

Improve understanding of general business practices, as well as written, oral and computer-based skills.

**PROGRAM LENGTH:** 2 sessions (based on Full-Time schedule)

**ENTRY LEVEL:** Intermediate 3

**AVAILABLE CAMPUS:** **S B**

**COURSE AND ELECTIVES:**

**AM 3 HOUR:**

- Business English (2 months)

**PM SKILLS ELECTIVES:**

Choose 2 of the following electives

- Business Interview Skills
- Business Presentation Skills
- Business Writing
- Business Culture
- Marketing





# Internship Programs and Services

ILSC offers both paid and unpaid work opportunities that let students put their language skills to the test in real workplace settings.

ILSC internship programs and services help students to add professional skills to their résumés; put their second language skills to the test; network with English speaking employees and clients; acquire professional work experience and references; and gain a true understanding of international business culture. In addition, students prepare for their work experience with ILSC's quality courses and programs surrounded by a diverse student population!

## VOLUNTEER INTERNSHIP PROGRAM (VIP)

**AVAILABLE CAMPUS:** **S B**

ILSC's Volunteer Internship Program combines English language studies with a volunteer internship in the Australian workplace. Working with a vast and ever-growing network of partner companies, Volunteer Internship Program coordinators are dedicated to placing you in an organisation that reflects your interests, work experience and educational background. This program provides a truly unique opportunity to gain Australian workplace experience while putting your English language skills into practice. Internships can be the humble beginning of your promising future!

## JOB PLACEMENT GUARANTEE SERVICE (JPG)

**AVAILABLE CAMPUS:** **B**

Australia's Job Placement Guarantee Service connects students with guaranteed work in rural or city settings.

Students will receive an orientation with ILSC's internship coordinators who will assess their experience and skills. Depending on their interests and available positions, students may be guided to take specific classes at the school to prepare them for success in their placement.

ILSC visits all workplaces prior to placing the students, and, if required, is available to offer support once students are on placement, even if they have graduated.

## FREE JOB CLUB

**AVAILABLE CAMPUS:** **S B**

The Job Club is a free, 4-week program that will help prepare students for work by teaching the basics of resumes, cover letters, interview skills, tax file numbers and bank accounts. Students will also get an understanding of business culture in Australia. Job Club is available to all ILSC Australia students.



I got to do a lot of great tasks with the company I was placed with so that I could improve my English. I also think that because of the internship I improved my listening very much.

**Sabrina Weidele,**  
*Germany*





# TESL for Young Learners

AVAILABLE CAMPUS: **S B**

The TESL–YL elective focuses primarily on teaching techniques and practical classroom methods. It is designed to provide initial training in teaching English to young learners in the age range of 2–16 years old. It is intended for students with little or no previous experience of teaching English who wish to learn the skills and techniques necessary for teaching young learners. To build practical teaching techniques, the TESL–YL skills elective is structured to offer as many opportunities for student-teaching as possible.

## TOPICS COVERED

- TESL–YL Theory and Methodology
- Reading Skills
- Writing Skills
- Listening Skills
- Spoken Interaction skills
- Vocabulary and Pronunciation
- Functional Ability
- Grammar Competency
- Spoken Production and Presentation Skills
- Test Taking Skills



# ESL Teacher Training, and Child Care Pathways

AVAILABLE CAMPUS: **S B**

After completing the TESL for Young Learners program, and improving English skills through ILSC–Australia’s core courses, skills electives and programs, students can move to ILSC TESOL College and take the Certificate IV in TESOL or the Diploma of TESOL. Students who complete the Certificate IV TESOL or Diploma of TESOL, can also transfer to Charlton Brown or MEGT Institute and complete a Child Care Certificate.



(See the ILSC TESOL College section for more details)



# ADMISSION

## GENERAL ADMISSIONS CHECKLIST

- I am 16 years of age or older
- I completed my registration one month before the first day of classes
- I submitted all applicable fees
- I completed the homestay application (if applicable)
- I obtained private medical insurance

## INTERNSHIP PROGRAM CHECKLIST

- I completed all of the requirements for general admissions
- I completed the separate internship program application

## VISAS AND IMMIGRATION

All students planning to study at ILSC Australia will require an appropriate visa. The following is general information. Visa regulations are determined by the Immigration Department in Australia and are subject to change. Please verify visa information with the nearest Australian embassy or consulate. Please refer to the following website to determine what type of visa you will need to study at ILSC Australia: [www.immi.gov.au/students/students/chooser/](http://www.immi.gov.au/students/students/chooser/)

### STUDENT VISA

Students applying for a Student Visa must be enrolled for Full-Time study and submit an electronic confirmation of enrollment from the school, along with the appropriate visa paperwork. On approval from Australian immigration a Student Visa will be issued for the duration of your studies, and allows students to get permission to work 20 hours a week, with some restrictions.

### WORKING HOLIDAY VISA

Students who apply for and receive a Working Holiday Visa can study for 17 weeks and can work full-time for a maximum of 6 months for one employer. Students on this visa are responsible for arranging their own health and travel insurance.

### OTHER VISAS

There are other visas that may allow study options as part of their conditions. Please check with the immigration link above or with the closest embassy or consulate. However, students with focused long term study needs should come on a Student Visa.

## LIVING IN AUSTRALIA

### COST OF LIVING

Students should ensure that they have sufficient funds to cover their living expenses while studying at ILSC–Brisbane and ILSC–Sydney. In addition to tuition fees, airfares and OSHC, living costs may include but are not limited to: rent, food, groceries, transport, utilities, entertainment and clothing. Please visit [www.ilsc.com.au/cost-of-living](http://www.ilsc.com.au/cost-of-living) for more information.

### OSHC – HEALTH COVERAGE

Overseas Student Health Cover (OSHC) is a compulsory requirement for a student visa. ILSC can arrange the purchase of OSHC for all students enrolled at our school. Visit [www.ilsc.com.au/visa-insurance.aspx](http://www.ilsc.com.au/visa-insurance.aspx) for more information

### DEPENDENTS

Students who bring dependent family members to Australia are responsible for their financial needs. School age children (5–16 years old) living in Australia for more than three months are required to attend school full-time. Students are required to pay full fees for their children in both public and private schools.

### EMPLOYMENT

International students and dependants may be eligible to work part-time during their period of study. However, finding a job may be difficult as there is strong competition from Australians and other overseas students. Students should not expect to cover their tuition fees or other expenses from part-time employment. Students who cannot afford to cover all their expenses during their stay in Australia are strongly advised to postpone their studies.



TAG YOUR PHOTOS  
#ILSC



# CONNECT WITH THE ILSC COMMUNITY



CER

In recog  
for the S  
O'Brien

CONQUER



You never know when it happens... but it happens! Well done... you received a Green Card each! – with Ricardo, Vanessa and Giorgio at ILSC.



**John** Nice work guys!  
Like 2



**Vanessa** We are so happy!  
What a wonderful experience... thanks  
Like 2



**Ricardo** I'm very happy for earning the Green Card, but more happy for meeting this awesome couple of friends!  
Like 3



JOIN  
**ILSC'S**  
**FACEBOOK**  
COMMUNITY TO  
CONNECT WITH PAST,  
CURRENT AND FUTURE  
STUDENTS!




FOLLOW  
ON T  
@ILSC





**WATCH**  
**ILSC TV** **YouTube**  
 Broadcast Yourself™

**ON YOUTUBE TO SEE VIDEOS OF OUR CAMPUSES, TO LEARN MORE ABOUT OUR PROGRAMS AND TO SEE REAL STUDENT EXPERIENCES!**

[www.youtube.com/user/ilscTV](http://www.youtube.com/user/ilscTV)



CERTIFICATE OF APPRECIATION AWARDED TO:

Daniele Gianotti

In recognition of your generous contribution as a crew member at the Sun Super Ride to Conquer Cancer in support of the Chris O'Brien Lifehouse.

11-13 October 2013

CANCER.ORG.AU



## CORPORATE SOCIAL RESPONSIBILITY (CSR)

**OUR CORPORATE SOCIAL RESPONSIBILITY MISSION AT ILSC IS TO POSITIVELY CONTRIBUTE TO THE SUSTAINABLE GROWTH AND DEVELOPMENT OF PEOPLE AND COMMUNITIES, AT THE SCHOOL, LOCALLY AND AROUND THE WORLD.**

We do this through our course delivery, community building activities inside and outside the school, awareness raising and fundraising events, our environmental policy, volunteerism, and supporting projects like our **Learn to Earn** sponsorship program at ILSC–New Delhi.

Learn more about how ILSC gives back on our website:  
[www.ilsc.com/corporate-social-responsibility.aspx](http://www.ilsc.com/corporate-social-responsibility.aspx)

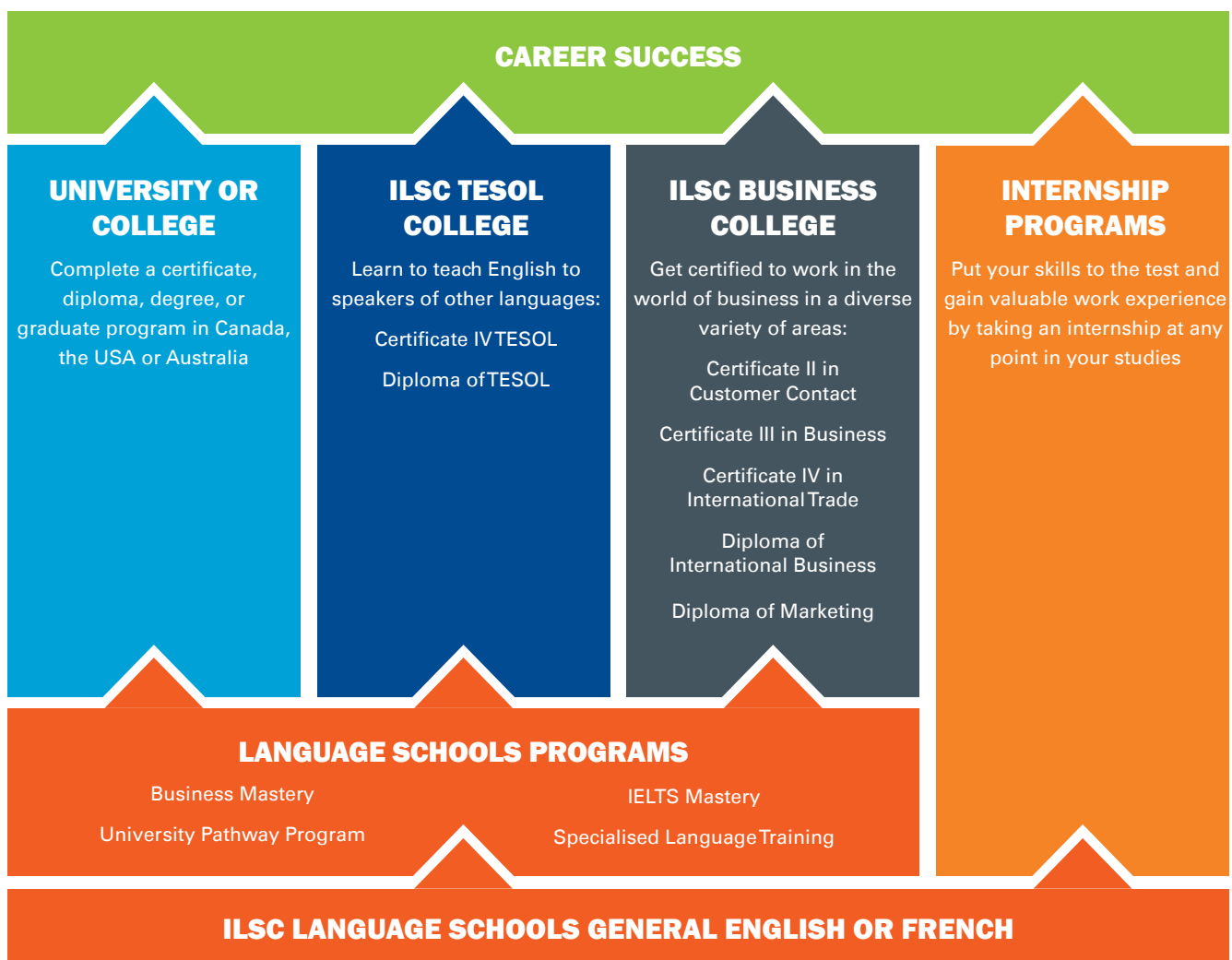




## YOUR FUTURE SUCCESS STARTS AT ILSC

Employ a strategy of graduated learning while you journey from a foundation in general English to Mastery programs or specialised language training. Then move onward to a university or college program at ILSC Business College, ILSC TESOL College or at one of our University Pathway partner institutions. At any point along your path, you can complement your studies with paid or unpaid internships to gain hands-on experience.

**Come start an amazing learning journey with us!**





# STORIES FROM ILSC GRADUATES



1

**ELOISE**  
(FRANCE)

Is in Australia on a Working Holiday Visa, and wants to guarantee a position for her Australian experience. She's taking a variety of courses and skills electives to help her succeed in a city job placement, arranged for her through ILSC's Job Placement Guarantee service.

2

**ALEXANDER**  
(RUSSIA)

Wants to attend college in an English speaking country. He's taking the University Pathway program and is choosing classes that will help prepare him for college life. When he finishes at ILSC, he's going to study engineering at one of ILSC's partner schools.

3

**ABDUL**  
(SAUDI ARABIA)

Wants to focus on achieving a high score on the IELTS test because he needs it to gain entry into university. He is focusing his studies on Academic and Test Preparation courses and will take the IELTS Mastery Program targeting an IELTS 6.0.

4

**SOO-JIN**  
(KOREA)

Wants to become an ESL instructor at home in Korea. She is focusing on courses to improve her own English skills and also taking TESL-YL. She plans to take the Diploma of TESOL at ILSC TESOL College when she finished her language studies.

5

**TAKAKO**  
(JAPAN)

Wants to work in international business. She decided to focus on a mix of business classes in order to complete a Business English Communication Mastery Program, and hone her business-related language skills. At the end of her language studies, she plans to take the Diploma of Marketing at ILSC Business College in order to get advanced placement in a Bachelor of Business at one of ILSC's UPath partner schools.



# CONTACT INFORMATION

## CANADA

### ILSC-VANCOUVER

555 Richards St., Vancouver, BC V6B 2Z5 Canada

**T** 1.604.689.9095 **F** 1.604.683.0771 **E** info@ilsc.com

### ILSC-TORONTO

443 University Ave., Toronto, ON M5G 2H6 Canada

**T** 1.416.323.1770 **F** 1.416.323.0153 **E** info@ilsc.com

### ILSC-MONTRÉAL

410 St-Nicolas, Suite 300, Montréal, QC H2Y 2P5 Canada

**T** 1.514.876.4572 **F** 1.514.876.4053 **E** info@ilsc.com

### ILSC MARKETING HEADQUARTERS

525 Dunsmuir St., Vancouver, BC V6B 1Y4 Canada

**T** 1.604.689.9095 **F** 1.604.683.0771 **E** info@ilsc.com

## USA

### ILSC-SAN FRANCISCO

One Embarcadero Center, Lobby 1, San Francisco, CA 94111 USA

**T** 415.677.9961 **F** 415.677.9591 **E** study@ilsc.com

### ILSC-NEW YORK

111 Nassau St., 4th Floor, New York, NY 10038 USA

**T** 1.212.253.2275 **F** 1.212.253.9655 **E** study@ilsc.com

## AUSTRALIA

### ILSC-BRISBANE

#### ILSC TESOL COLLEGE-BRISBANE

#### ILSC BUSINESS COLLEGE-BRISBANE

232 Adelaide St., Level 1, Brisbane, Queensland 4000 Australia

**T** +61.7.3220.0144 **F** +61.7.3200.0277 **E** info@ilsc.com.au

CRICOS: 02137M

RTO NUMBER: 31564

### ILSC-SYDNEY

#### ILSC TESOL COLLEGE-SYDNEY

#### ILSC BUSINESS COLLEGE-SYDNEY

540 George St., Level 6, Sydney, NSW 2000 Australia

**T** +02.9247.1744 **F** +02.9247.1644 **E** info@ilsc.com.au

CRICOS: 02137M

RTO NUMBER: 31564

ILSC-Sydney, ILSC-Brisbane, ILSC TESOL College and ILSC Business College are the trading names of ILSC (Brisbane) PTY LTD.

## INDIA

### ILSC-NEW DELHI

B-17 Shivalik, Gitanjali Road, Near Panchsheel Park,

Malviya Nagar, New Delhi, 110017 India

**T** 011+91+26691534 **T** +011 26691531 **E** inquiry@ilsc.in



# Winner

Chain School 2013



# WWW.ILSC.COM